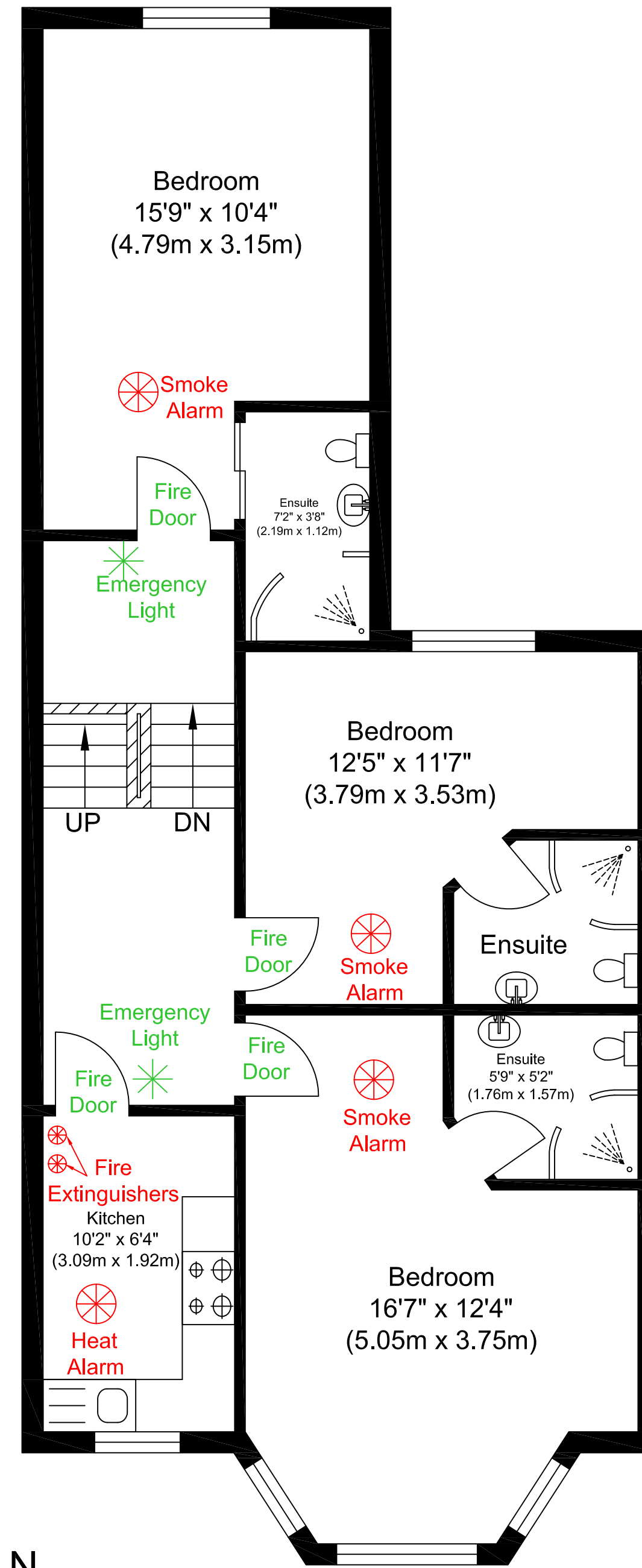
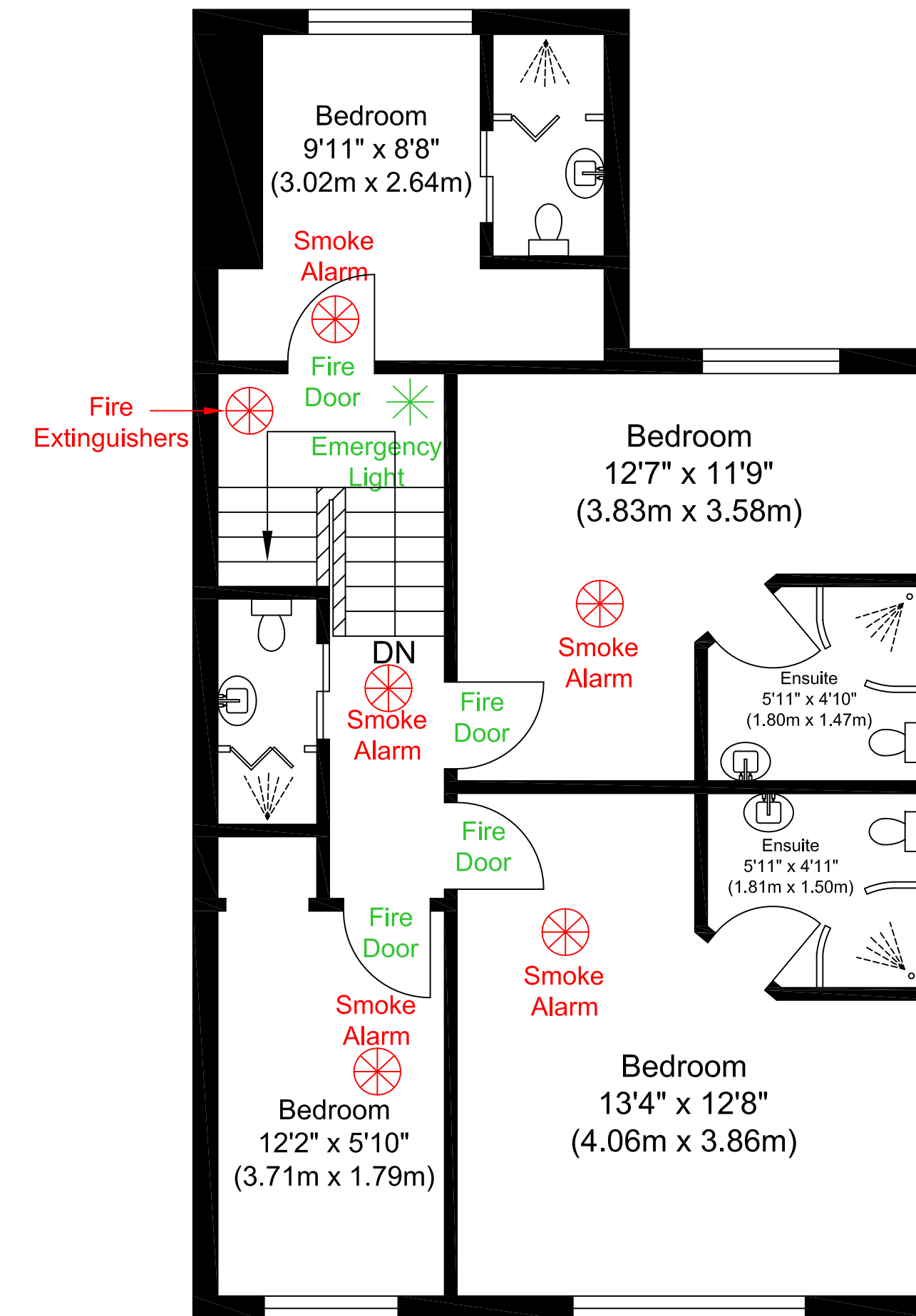


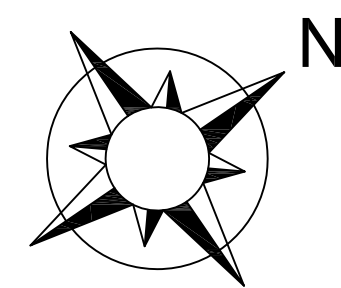
Ground Floor
 Approximate Floor Area
 746.90 sq. ft.
 (69.39 sq. m)



First Floor
 Approximate Floor Area
 682.97 sq. ft.
 (63.45 sq. m)



Top Floor
 Approximate Floor Area
 547.45 sq. ft.
 (50.86 sq. m)



Total Gross Internal Area
 1977.33 sq. ft.
 (183.70 sq. m)

85 Devonport Road, London, W12

Illustration for identification purposes only, measurements are approximate, not to scale.